

Vocabulary Activity

Directions: Read each word from the story below. Think of what it means. Then, draw a line to match the word to its synonym.

Language Hints!

- A synonym is a word that has the same meaning as another word.
- *Big* is a synonym for *large*. *Moist* is a synonym for *damp*.

Words from the Story

Synonyms

- | | |
|----------------|-----------|
| 1. monotonous | noticed |
| 2. forsake | hoarse |
| 3. languishing | • boring |
| 4. husky | actual |
| 5. detected | exceed |
| 6. surpass | weakening |
| 7. veritable | abandon |

Directions: Answer this question.

8. Why is Charlotte **swollen**?

Guided Close Reading

Closely reread the part in chapter 16 where Wilbur is about to be put into the crate. Start with, “Well, said Mrs. Zuckerman” Stop at, “He rose slowly to his feet, while the geese cheered.”

Directions: Think about these questions. In the space below, write ideas or draw pictures as you think. Be ready to share your answers.

❶ According to the text, why does Wilbur faint?

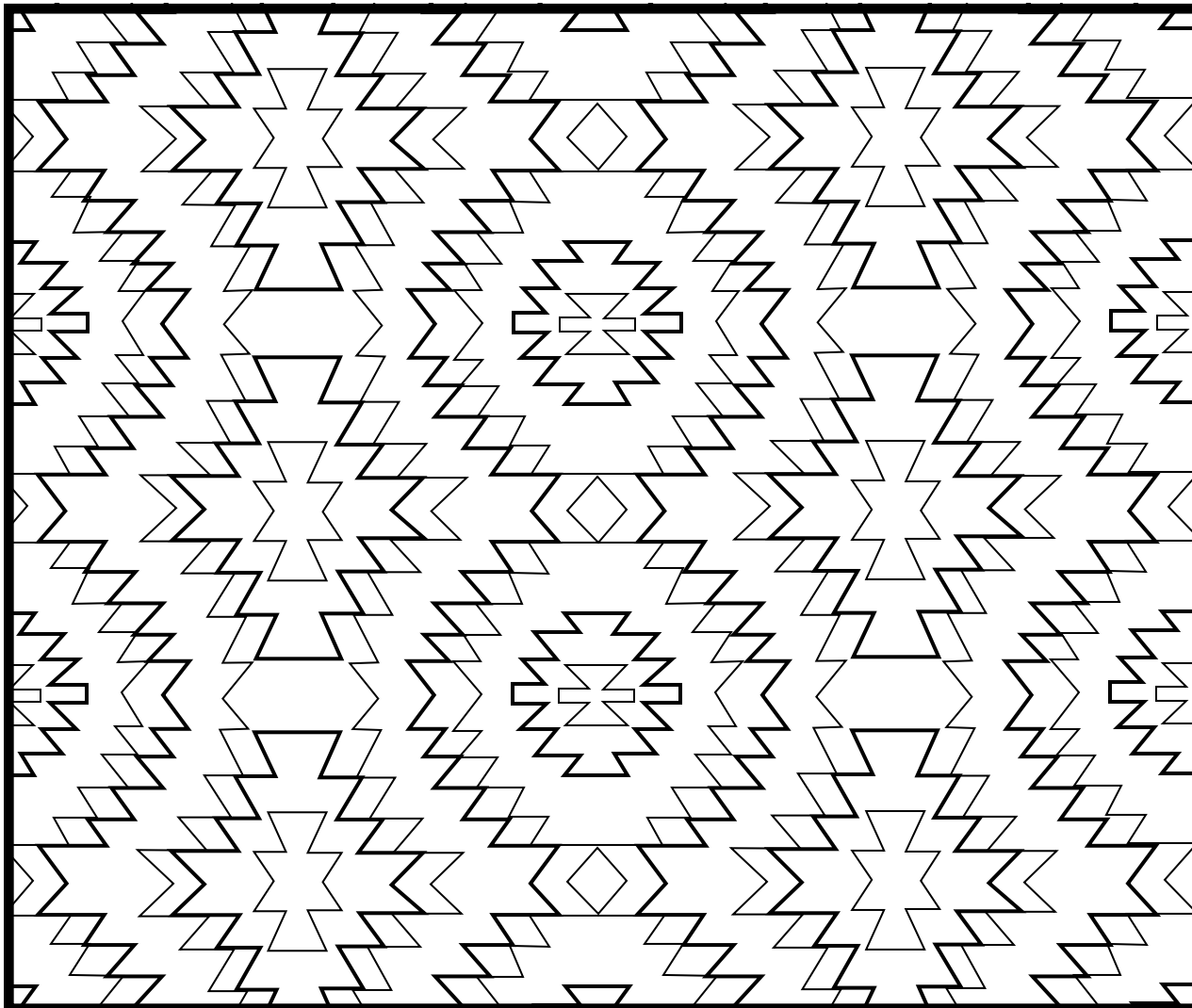
❷ Based on the events in the story, is it a compliment when Templeton says, “What fantastic creatures boys are!”?

❸ How, specifically, does Fern react to Wilbur’s struggles?

Making Connections-Navajo Textiles

Lurvy is delighted when he wins a Navajo blanket at the fair. The Navajo are American Indians who live in the Southwest. For hundreds of years, they have grown sheep and used their wool to weave blankets and rugs. Their work uses line patterns.

Directions: Look at pictures of Navajo blankets in books or online. Notice the colors used. Color the Navajo blanket below using those colors.



Language Learning-Adjectives

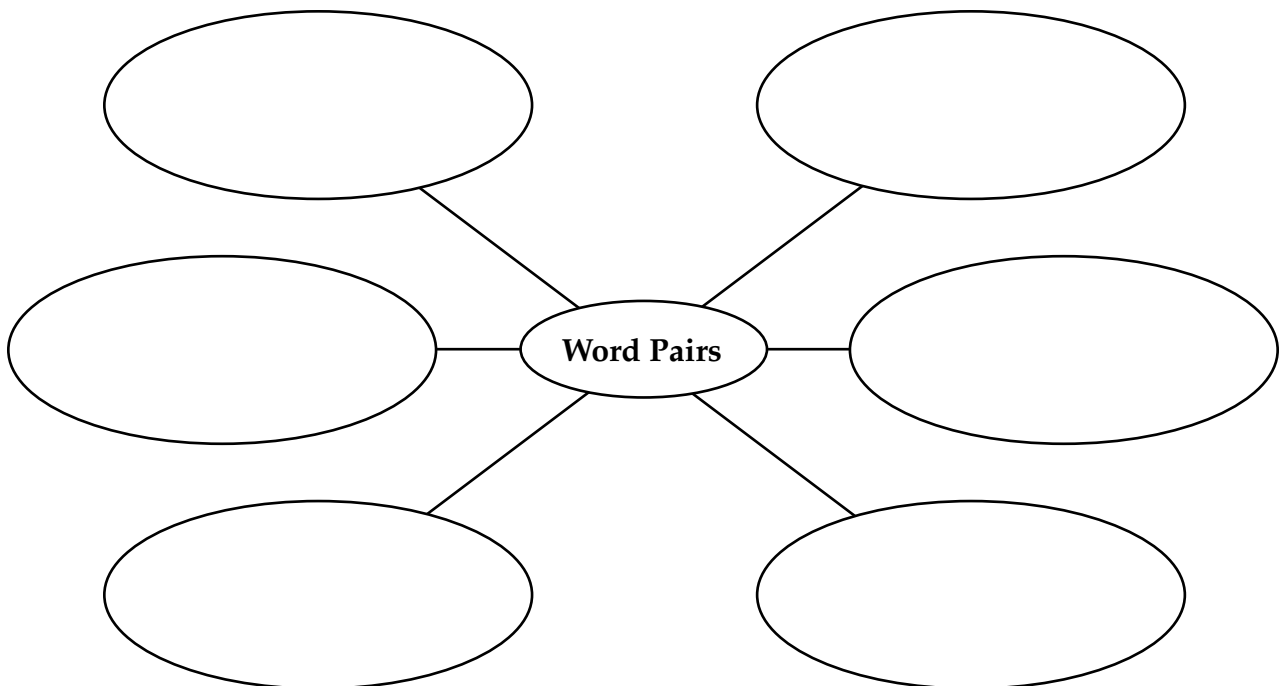
Directions: Circle the words in the Word Bank that are adjectives. Write each one in an oval on the word web below. Then, add a noun from the Word Bank to match each adjective. Plan ahead so every adjective is paired with a logical noun.

Language Hints!

- Adjectives are words that describe nouns.
- Adjectives may tell which one, which kind, what color, or how many.

Word Bank

large	quarters	beautiful	sheep
midway	old	five	pig
hot	pink	day	dusty
ears	web	famous	crate



Story Elements-Setting

Directions: Think about some of the settings in this section of *Charlotte's Web*. Write the settings below. Write at least three details about each of the settings.

Setting	Details
	<ul style="list-style-type: none"> • • •
	<ul style="list-style-type: none"> • • •
	<ul style="list-style-type: none"> • • •
	<ul style="list-style-type: none"> • • •

Name _____ Date _____

Story Elements-Character

Directions: Create an advertisement to get people to come to the fair to see Wilbur, Zuckerman's Famous Pig.

